

## Ben Dean

Contemporary (post 1945) photography

### *Untitled (Computer Simulation of Islais Landing Waterfront Park, San Francisco)*

2005

Digital C-print on paper

19 9/16 x 50 1/4 in. (49.69 x 127.64 cm)

Photography

---



## Thomas Barrow

Modern 19th - 1945 photography

(*Kansas City, MO, 1938 -*)

### *Studio Notes, Page V*

1992

Photolithograph on paper

23 in. x 19 in. (58.42 cm x 48.26 cm)

Graphic Arts

---



## Thomas Barrow

Modern 19th - 1945 photography

(*Kansas City, MO, 1938 -*)

### *Studio Notes, Page*

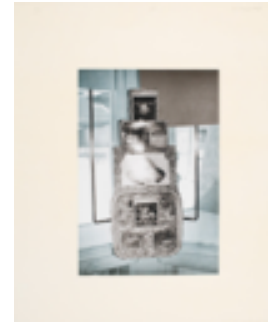
1992

Photolithograph on paper

23 in. x 19 in. (58.42 cm x 48.26 cm)

Graphic Arts

---



## Frederick Hammersley

Contemporary (post 1945) Painting

(*Salt Lake City, UT, January 5, 1919 - May 31, 2009,*

### *'B' Overprint*

1969

Ink on paper

11 in. x 14 7/8 in. (27.94 cm x 37.78 cm)

Graphic Arts

---



## Frederick Hammersley

Contemporary (post 1945) Painting

(*Salt Lake City, UT, January 5, 1919 - May 31, 2009,*

### *Narrow IN Narrow OUT*

1969

Ink on paper

11 in. x 14 7/8 in. (27.94 cm x 37.78 cm)

Graphic Arts

---



## Frederick Hammersley

Contemporary (post 1945) Painting

(Salt Lake City, UT, January 5, 1919 - May 31, 2009,

### **UP-TIGHT**

March 21, 1969

Ink on paper

11 in. x 14 7/8 in. (27.94 cm x 37.78 cm)

Graphic Arts

---



## Henri Cartier-Bresson

Photographer

(Chanteloup-en-Brie, France, August 22, 1908 - August 3,

### **Les Halles, Paris**

1968

Gelatin silver print on paper

6 3/8 x 9 3/8 in. (16.19 x 23.81 cm)

Photography

---



## Richard Ross

Contemporary (post 1945) Photography

(New York City, NY, 1947 - )

### **Abbott Data Storage. Bellsize Park London, England 2003 N #21 P #7 200 ft below**

2004

Chromogenic print on paper

11 x 8 1/2 in. (28 x 22 cm)

Photography

---



## William McCance

Modern (19th century-1945) Graphic Arts

(Cambuslang, United Kingdom, 1894 - 1970, Girvan, United

### **Machine Gods**

c. 1928

Etching on paper

4 5/16 x 5 11/16 in. (10.95 x 14.45 cm)

Graphic Arts

---

